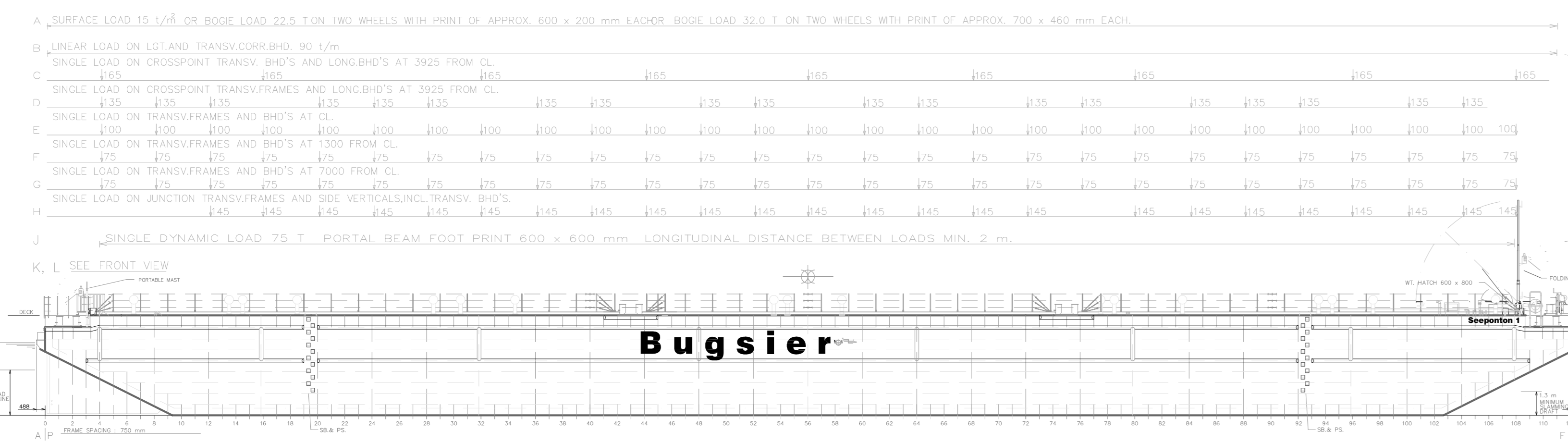
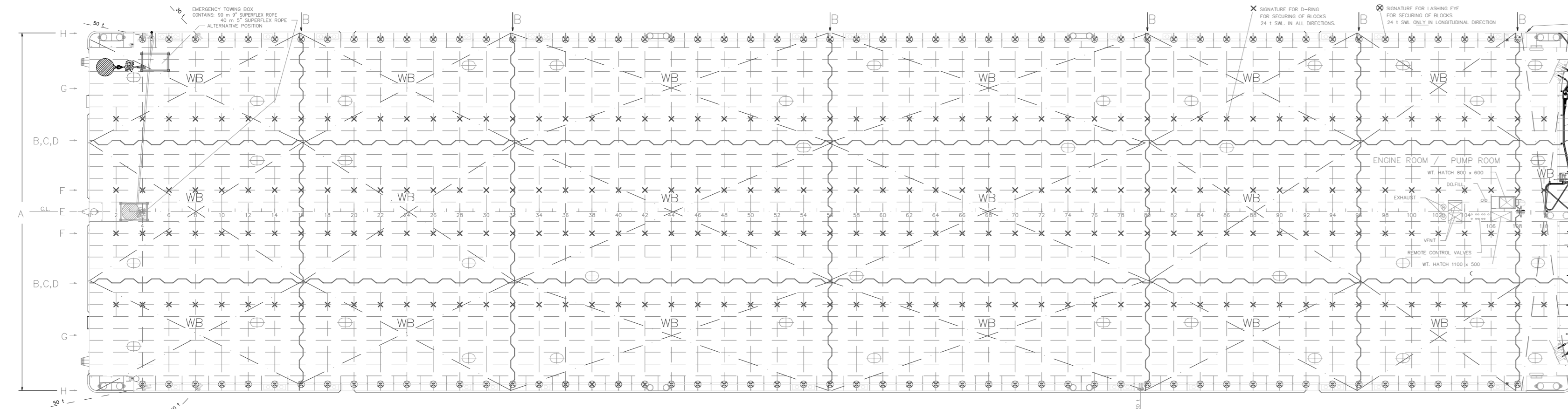


# Seeponton 1



TRIM TABLE IN METRES

	0.280	0.212	0.120	0.011	-0.069	-0.143	-0.181 A. P.	DRAUGHT
0.80 m F. P.	-0.149	-0.081	0.011	0.200	0.274	0.311 F. P.	0.80 m	
DRAUGHT A. P.	0.285	0.194	0.112	0.014	-0.053	-0.124	-0.158 A. P.	DRAUGHT
1.50 m F. P.	-0.129	-0.058	0.014	0.112	0.250	0.284 F. P.	1.50 m	
DRAUGHT A. P.	0.211	0.162	0.092	0.020	-0.037	-0.089	-0.118 A. P.	DRAUGHT
3.00 m F. P.	-0.093	-0.045	0.020	0.097	0.207	0.233 F. P.	3.00 m	
DRAUGHT A. P.	0.201	0.155	0.094	0.020	-0.033	-0.083	-0.108 A. P.	DRAUGHT
4.00 m F. P.	-0.086	-0.041	0.020	0.094	0.147	0.197	0.222 F. P.	4.00 m



POS. NO.	COMPARTMENT	FRAME NO.	CAPACITY		CENTRE OF GRAVITY		MAX. FREE SURFACE MOMENT OF INERTIA m <sup>4</sup>	
			100%	98%	DISTANCE FORWARD OF AP	HEIGHT ABOVE BASELINE		
<b>WATER BALLAST TANKS</b>								
11	Tenk. WB. CT. 1. FWD	108-112	1162.8	1166.8	1163.4	82.36	4.07	2084
22	Tenk. WB. SB. 2	96-108	281.2	288.2	282.4	76.22	2.94	183
33	Tenk. WB. PS. 2	86-108	281.2	288.2	282.4	76.22	2.94	183
31	Tenk. WB. CT. 3	80-96	408.0	418.2	409.8	66.00	2.75	244
32	Tenk. WB. SB. 3	80-96	408.0	418.2	409.8	66.00	2.75	244
33	Tenk. WB. PS. 3	80-96	408.0	418.2	409.8	66.00	2.75	244
41	Tenk. WB. CT. 4. FWD	56-80	764.3	764.3	749.2	51.00	2.75	712
42	Tenk. WB. SB. 4. FWD	56-80	764.3	764.3	749.2	51.00	2.75	712
43	Tenk. WB. PS. 4. FWD	56-80	764.3	764.3	749.2	51.00	2.75	712
41A	Tenk. WB. CT. 4. AFT	32-56	611.9	627.2	614.7	33.00	2.75	366
42A	Tenk. WB. SB. 4. AFT	32-56	611.9	627.2	614.7	33.00	2.75	366
43A	Tenk. WB. PS. 4. AFT	32-56	611.9	627.2	614.7	33.00	2.75	366
51	Tenk. WB. CT. 5	16-32	309.0	322.4	315.0	18.00	2.75	475
52	Tenk. WB. SB. 5	16-32	309.0	322.4	315.0	18.00	2.75	475
53	Tenk. WB. PS. 5	16-32	309.0	322.4	315.0	18.00	2.75	475
61	Tenk. WB. CT. 6	0-16	414.7	425.1	415.5	6.86	3.11	244
62	Tenk. WB. SB. 6	0-16	414.7	425.1	415.5	6.86	3.11	244
63	Tenk. WB. PS. 6	0-16	414.7	425.1	415.5	6.86	3.11	244
TOTAL			4428	4539.9	4457.1	40.58	2.83	8226
<b>DIESEL OIL TANK</b>			<b>DENSITY 0.850</b>					
Diesel oil Tank PS			1.9	1.6	1.6	80.00	3.00	0

**TRIM TABLE NOTE**

THE TRIM TABLE GIVES CORRECTION IN METRES FOR DRAUGHT FORWARD AND AFT FOR EACH 100 t LOADED IN ANY PLACE.

JUST BELOW THE ADDED WEIGHT THE DRAUGHT CORRECTION IS READ OFF.

IF DISCHARGING 100 t. THE PLUS AND MINUS SIGNS ARE TO BE INTERCHANGED.

EXAMPLE: FIND THE CHANGE IN TRIM AFTER LOADING 200 t AT FR. NO. 90

ORIGINAL DRAUGHT	AFT	3.950 m	FORWARD	3.550 m
CORRECTION	2 x (-0.033 m)	= -0.066 m	2 x 0.147 m	= 0.294 m
NEW DRAUGHT		3.884 m		3.844 m

**FREEBOARD - DRAUGHT - DEADWEIGHT**

ZONE	FREEBOARD	DRAUGHT	EXTR.	DEADWEIGHT
TROPICAL FRESH WATER	3.346	4.189		5276
FRESH WATER	1.428	4.106		5154
TROPICAL	1.439	4.096		5279
SUMMER WINTER AND WNA	1.522	4.013		5134

HEIGHT OF NOMINAL DECK LINE ABOVE BOTTOM OF KEEL 5.528 m

**THE DEADWEIGHT INCLUDES:**

SPACE PARTS IN EXCESS REQUIREMENTS.

TONNAGE			
TYPE	UNIT	UNDER DECK	NET
INTERNATIONAL		2473	741

**LIGHT SHIP DATA**

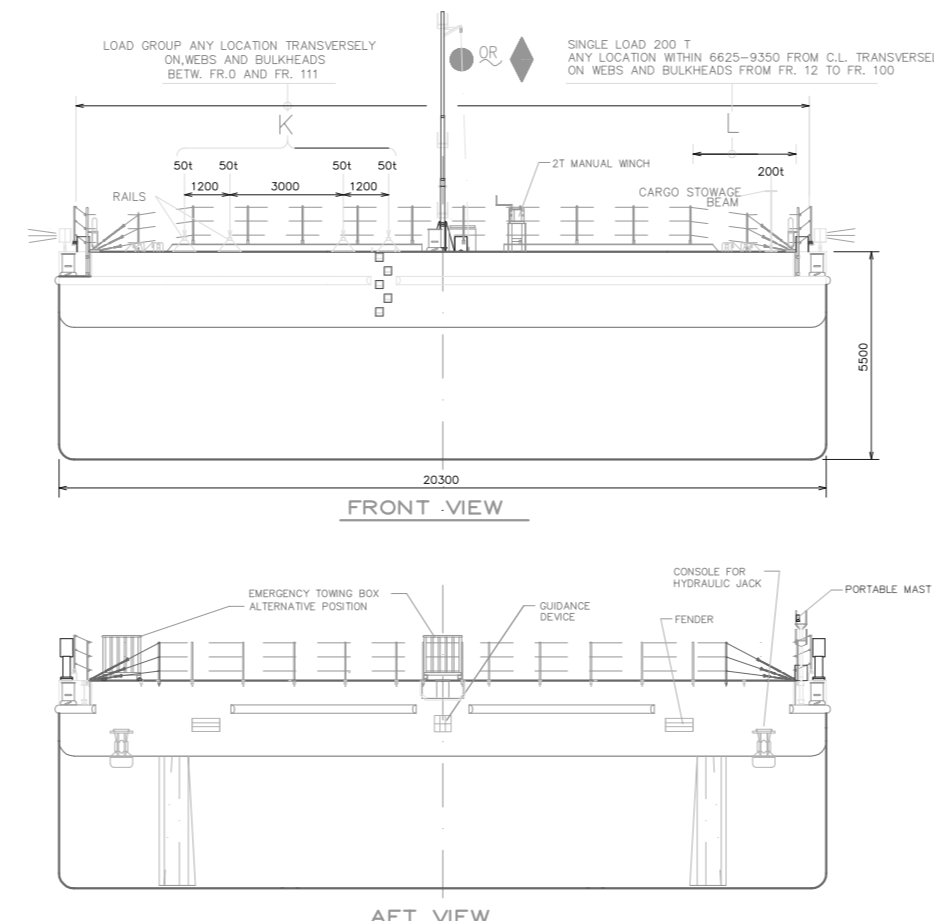
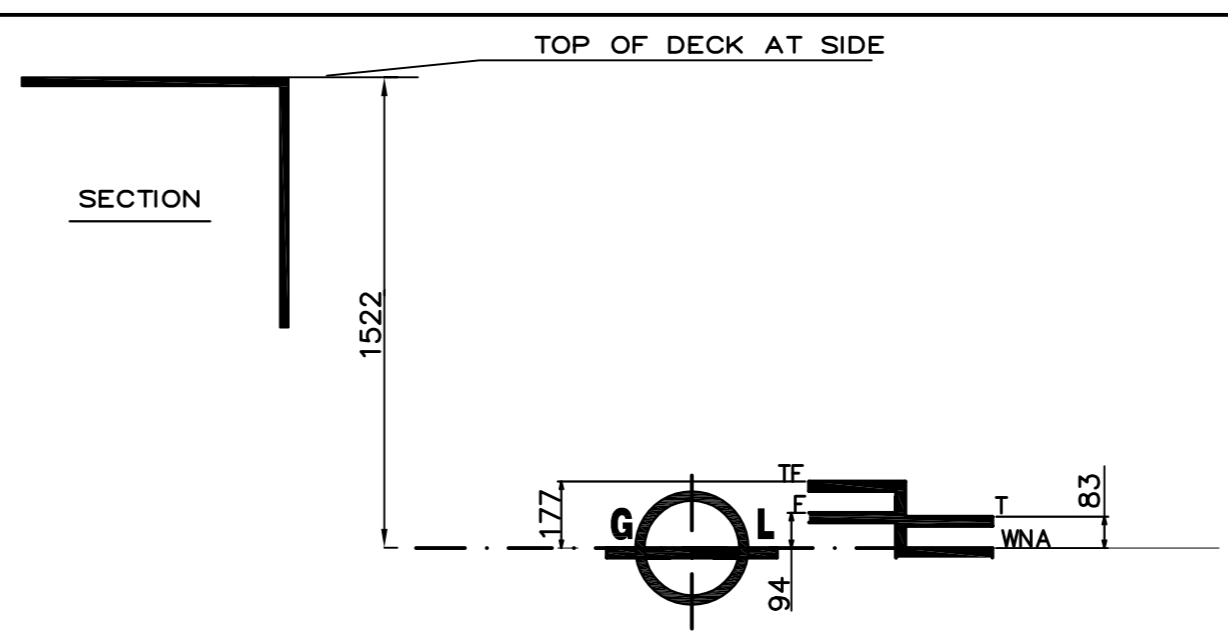
LIGHT SHIP WEIGHT	1380 t
DRAUGHT AT A.P.	0.75 m
DRAUGHT AT F.P.	1.00 m

**LIGHT SHIP WEIGHT INCLUDES:**

FITTINGS EQUIPMENT AND INVENTORIES READY FOR SEA SERVICE AND TOWING EQUIPMENT

**NOTE:**

THE ABOVE DRAUGHTS FOR LIGHT-WEIGHT ARE APPROXIMATE.



SHIP'S NAME "SEEPONTON 1"  
 IMO No. 9364497  
 GL NUMBER 107597  
 PORT OF REGISTRY HAMBURG  
 CALL LETTERS D I O C 2  
 OWNER'S NAME ODENSE STEEL SHIPYARD Ltd.  
 YARD NUMBER L 605  
 KEEL LAID 2005  
 CLASS Germanischer Lloyd  
 HULL CLASS NOTATION 100 AN PONTOON ICE CLASS 1A

**HULL PARTICULARS**

LENGTH OVERALL----- 84.61 m  
 LENGTH P.P.----- 84.00 m  
 BREADTH MOULDED----- 20.30 m  
 DEPTH MOULDED----- 5.50 m  
 DRAUGHT EXTR. (SUMMER)----- 4.01 m  
 CORRESPONDING DEADWEIGHT-----ABT. 5134 t

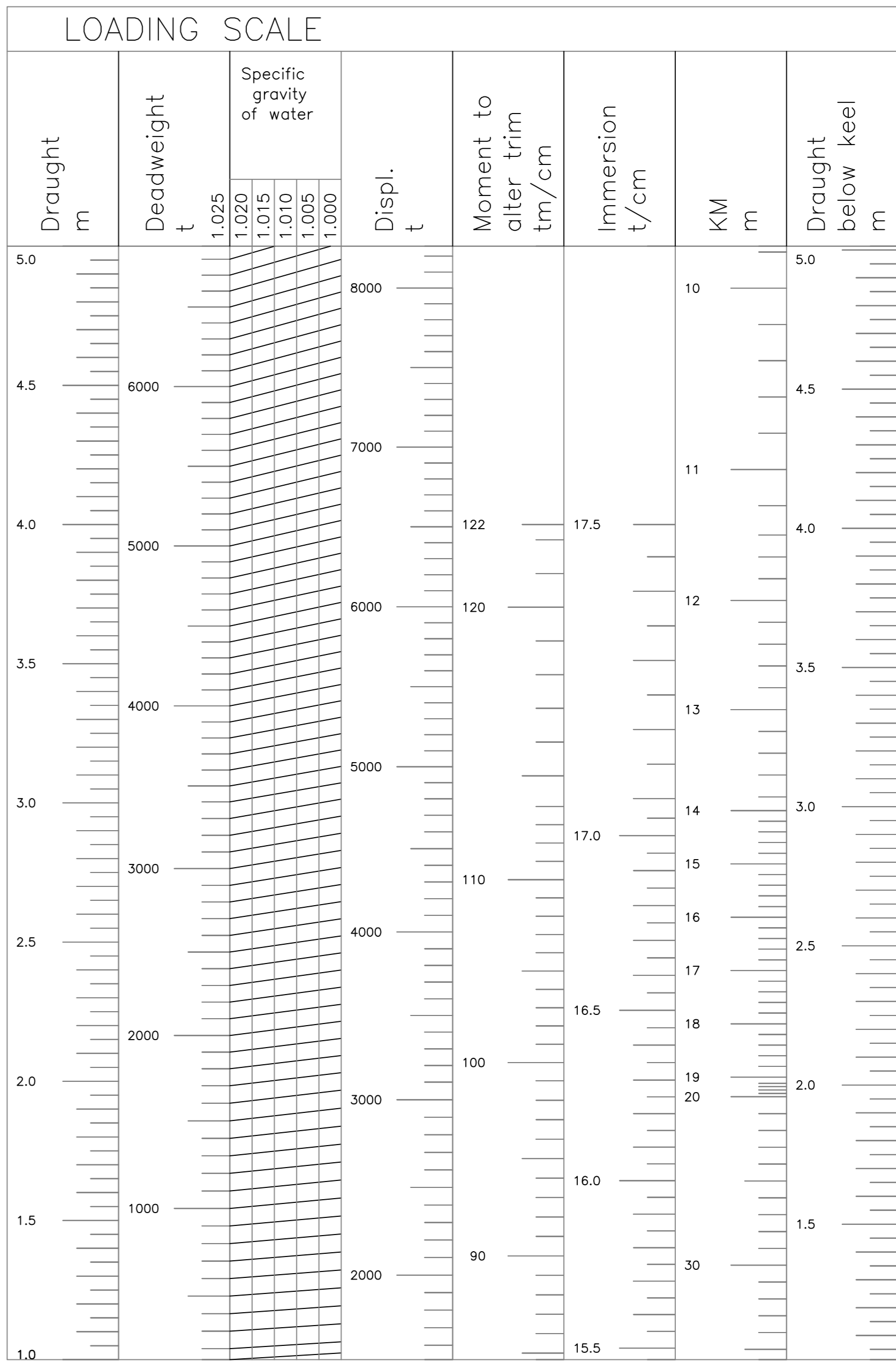
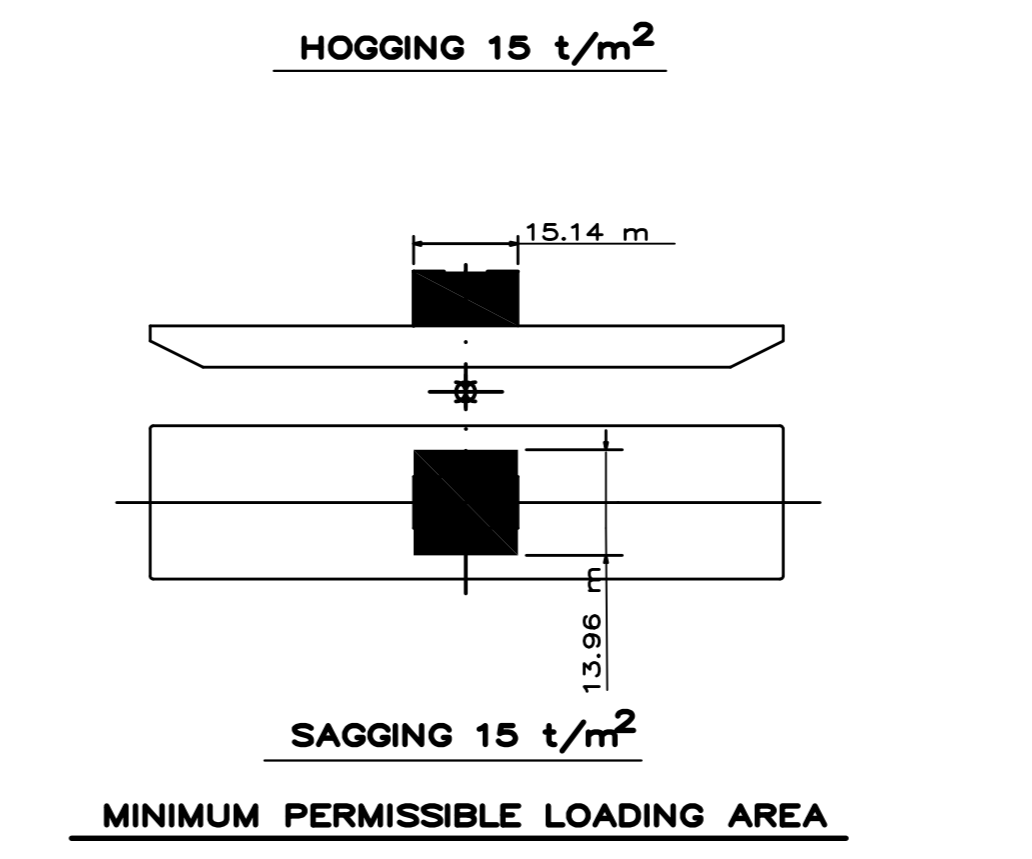
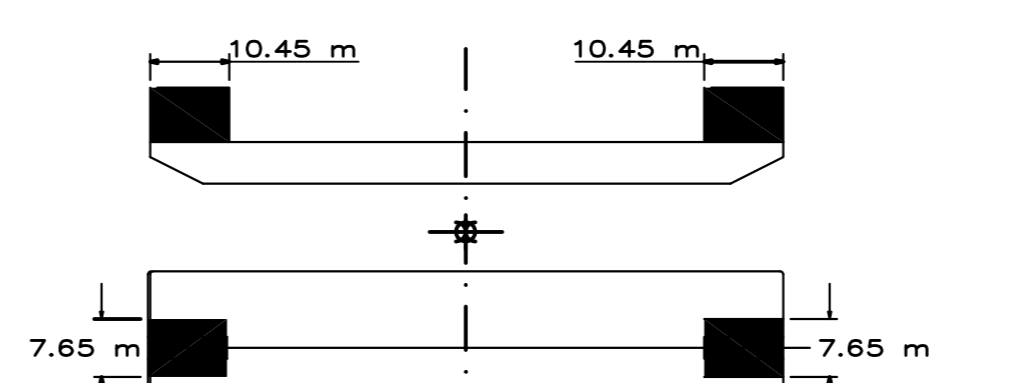
**MACHINERY AND OUTFIT PARTICULARS**

**AUXILIARY ENGINES:**

TWO 4 CYL. FOUR-STROKE DIESEL ENGINES.  
 MAKE "Sisu Diesel" TYPE 420 DSMG 75 kW AT 1600 RPM.  
 TWO CENTRIFUGAL BALLAST PUMPS. MAKE: "DESMI" WITH A CAPACITY OF 600 m<sup>3</sup>/h AT 25 m WC.  
 THREE BATTERIES FOR ELECTRIC START AND LIGHTING.  
 VENTING SYSTEM FOR ENGINE ROOM BY DIESEL ENGINE FANS.

**OUTFITTING:**

FOUR TOWING BRACKETS. MIN. BREAKING LOAD 160 t.  
 FOUR MOORING BRACKETS. TWO 50 t SWL. TWO 30 t SWL.  
 ONE TOWING BRIDLE AND ONE EMERGENCY TOWING BRIDLE.  
 ONE WINCH 2 t MANUAL.  
 TWO LIFEBOAT WITH 20 m LINE



ALL FIGURES ARE APPROXIMATE AND COULD BE SUBJECT TO MINOR MODIFICATIONS.

ISSUING STAMPS

SHIP NO.	DATE	SIGNED

<b>Odense Linde</b> Odense Steel Shipyard Ltd.	SCALE 1:200 DEPT. 45,10	DRAWN ANP 19-08-05 CHECKED DAE 19-08-05	ISSUED REV. NO. 0
Seeponton 1, Hamburg Bugsier-, Reederei- u. Bergungs- Gesellschaft mbH & Co. KG	SHIP NO. L605	DRAWING NO. 1063-339-200	